

Innovative technology for outstanding versatility



Features	Compact Incubator	General protocol incubators		Advanced protocol incubators	Advanced protocol security incubators	
	Table top	Table top	Large capacity	Table top	Table top	Large capacity
Temperature range	17 - 50 °C	ambient +5 °C - 75 °C		ambient +5 °C - 105 °C		ambient +5 °C - 105 °C
Convection technology	Mechanical	Gravity		Dual		Mechanical
Fan speed adjustable	•	•		6 speeds		gentle / fast
Rounded corners	✓	✓		✓		✓
Microprocessor control	✓	✓		✓		✓
Automatic overtemperature alarm (audible and visual)	•	✓		✓		✓
Access port	•	✓		✓		✓
Stackable	•	✓	•	✓	✓	•
Stainless steel interior	•	AISI 430		AISI 304		AISI 304
RS232 interface	•	✓		✓		✓
Internal glass door	•	✓		✓		✓
Easy calibration routine	✓	✓		✓		✓
Timer functions	•	On / Off		choice of weekly/ hourly/ real time		choice of weekly/ hourly/ real time
Dry alarm contact for connection of alarm device	•	•		✓		✓
Optional stainless steel exterior	•	•		•		✓
Certified decontamination cycleup	•	•		•		✓
Automatic undertemperature alarm	•	•		•		✓
Door alarm	•	•		•		✓
Lockable door	•	•		•		✓
Connection for optional sample temperature sensor	•	•		•		✓
Lockable door	•	•		•	✓	•
Connection for optional sample temperature sensor	•	•		•	✓	

*Class 3.1 overtemperature protection, just without the hassle of setting manually. Note: All units have doors with 180° door opening for easy access.

Three airflow technologies

01

Gravity convection

provides gentle airflow, with minimized drying out of samples. The best choice for applications with open plates or open containers.

02

Mechanical convection

provides even higher temperature uniformity and stability to ensure an optimal environment for your samples. Fan enables fast recovery time after opening the door. A mechanical convection incubator can even be used for drying applications at high temperature settings – eliminating the need for an additional incubator.

03

Dual convection

is a unique technology which allows the operator to choose the fan speed – from 0% (which equals gravity convection) up to 100%. Depending on the application, the speed can be adapted to provide optimal airflow for your valuable samples. Even at 0% fan speed, temperature uniformity and stability are great.



Select the right model for your needs

Application	Material/ solution	Sample requirements	Recommended solution
Bacterial research	Bacteria	Temperatures between 30°C and 70°C	
Microbiology	Microorganisms, cells	Temperatures between 30°C and 70°C	General Protocol, Advanced Protocol or Advanced Protocol Security for highest temperature accuracy, and time control
Coliform determination	Bacteria	Temperature around 37°C	
Histology	Tissue	Temperature around 37°C	
Paraffin embedding	Paraffin	Temperatures of 37°C to around 50°C	
Egg incubation	Eggs	Temperature around 37°C	General Protocol, Advanced Protocol or Advanced Protocol Security for highest temperature accuracy, and time control
Heated storage	Media, samples	Temperature depends on material and specific application – between 30°C and 105°C	General Protocol for temperatures up to 75°C, Advanced Protocol or Advanced Protocol Security for highest temperature accuracy, and time control – up to 105°C
Gene cloning	Bacteria, cells	Temperature around 37°C	Advanced Protocol for highest temperature accuracy and time control Advanced Protocol Security with additional safety features for peace of mind
Pharmaceutical stability testing	Various	Temperatures of 37°C up to 105°C	
Food and beverage testing	Various	Temperatures of 37°C up to 105°C	
BOD/water pollution testing	Water	Temperature around 20°C	Compact
Yeast growth	Yeast	Temperatures between 10°C and 37°C	General Protocol for temperatures above ambient +5°C
Hatching of insects, fish	Insects	Temperature near or below ambient	Advanced Protocol or Advanced Protocol Security for highest temperature accuracy or Compact for temperatures as low as 17°C. For lower temperatures check the Heratherm refrigerated models at www.thermoscientific.com/incubators

Footprint Comparison*



Making best use of valuable space in your lab, Heratherm microbiological incubators are designed with a very small footprint ratio compared to the interior volume. In addition they are stackable without the need of any tools or stacking devices.**

manufacturer A
manufacturer B

Maximized space efficiency



*Based on competitors' published specs;

**Optional stacking kit only required if decon cycle or oven is used below, or for stacking different sizes

Heratherm Compact Microbiological Incubator

The most compact unit of the Heratherm Microbiological Incubator family has an 18 L capacity, ideal for a personalized workspace



Heratherm Compact
Microbiological Incubator, 18 L



Easy to use interface

Smart solution for small volume applications

- Minimal footprint for space restricted lab areas and mobile use, for e.g. for veterinary care
- Broad temperature range for e.g. yeast growth (at 25 °C), microbiological incubation (at 37 °C), storage (at defined temperature)
- Temperatures from below ambient (as low as 17 °C) up to 50 °C
- Energy consumption is as low as 14 W (at 37 °C), due to energy efficient Peltier technology
- Easy calibration routine for high temperature accuracy
- Internal light facilitates sample observation

Use for Campylobacter testing

Campylobacter species have been identified as the second most common cause of foodborne illness in the U.S. behind Salmonella, and number one cause of foodborne diarrhea in Europe.

Effective testing methods for diagnosis and treatment require culturing the bacteria at 41.5° to 42°C. The use of anaerobe jars or gas packs is recommended, since low oxygen conditions improve the growth.

Order numbers	50125882	50129111	50140500
Model		IMC18	IMC18 with door cover
Door	Standard / with window	Intransparent / no window	
Convection technology		Mechanical convection	
Temperature range (°C)		17 °C to 50 °C	
Spatial temperature deviation (at 37 °C)		± 1.2 °C	
Temperature deviation over time (at 37 °C)		± 0.2 °C	
Footprint (m² / sqft)		0.12 / 1.3	
Chamber volume (L / cuft)		approx. 18 / 0.65	
Chamber dimensions (mm / in (W x H x D))		180 x 310 x 290 / 7.1 x 12.2 x 11.4	
Exterior dimensions (mm / in (W x H x D))		260 x 415 x 470 / 10.2 x 16.3 x 18.5	
Number of shelves (standard / max)		2 / 3	
Max. shelf load (kg / lb)		2 / 4.4	
Rated voltage / frequency (V / Hz)		100 - 240 / 50/60	
Rated power / max. current (W / A)		45 / 0.45 - 0.85 R	
Supplied plugs	EU, UK, AUS	US plug Nema 15	Plugs for North America, EU, China, Australia
Weight (kg / lb)		7.2 / 15.9	
Energy consumption at 37°C (W)		14	

Note: All figures in all tables are typical average values for series devices, based on factory standard following norm Din12880. Please contact us for certification information or IQ/OQ documents.

Heratherm General Protocol Incubators

Designed for routine applications in pharmaceutical, medical, food and research laboratories

Intelligent design for improved results

- Gravity convection provides gentle air flow and minimal drying out
- Temperature range from ambient +5 °C up to 75 °C
- Temperature uniformity of ± 0.6 °C
- Temperature stability of ± 0.2 °C
- Corrosion resistant stainless steel chamber (1.4016)

Easy to use interface

- Intuitive user interface for easy temperature setting
- Large vacuum fluorescent display for easy reading
- Intuitive 24 hour timer function to program automated switch on or off



Heratherm General Protocol Microbiological Incubators, 60 L, 100 L, 180 L models



Smooth inner chamber with easy to clean rounded corners

The flexible shelf system can be removed with just a finger click to easily clean the chamber

Specifications table/order numbers General Protocol Incubators

Order numbers	51028130	51028131	51028132
Model	IGS60	IGS100	IGS180
Convection technology	Gravity convection	Gravity convection	Gravity convection
Temperature range (°C)	ambient +5 °C to 75 °C	ambient +5 °C to 75 °C	ambient +5 °C to 75 °C
Spatial temperature deviation at 37°C	± 0.6 °C	± 0.6 °C	± 0.6 °C
Temperature deviation over time at 37°C	± 0.2 °C	± 0.2 °C	± 0.2 °C
Footprint (m ² / sqft)	0.3 / 3.2	0.36 / 3.9	0.47 / 5.1
Chamber volume (L / cuft)	75 / 2.6	117 / 4.0	194 / 6.85
Interior Dimensions (mm / in (W x H x D))	354 x 508 x 414 / 13.9 x 20.0 x 16.3	464 x 608 x 414 / 18.3 x 23.9 x 16.3	464 x 708 x 589 / 18.3 x 27.9 x 23
Exterior Dimensions (mm / in (W x H x D))	530 x 755 x 565 / 20.9 x 29.7 x 22.2	640 x 855 x 565 / 25.2 x 33.7 x 22.2	640 x 955 x 738 / 25.2 x 37.6 x 29.1
Number of shelves (standard / max)	2 / 13	2 / 16	2 / 19
Max. shelf load (kg / lb)	25 / 55	25 / 55	25 / 55
Rated voltage / frequency (V / Hz)	120 / 60	120 / 60	120 / 60
Rated power / max. current (W / A)	300 / 1.3	520 / 2.3	710 / 3.1
Weight (kg / lb)	40 / 88	51 / 112	65 / 143
Energy consumption at 37 °C (W)	21	26	31

¹Depth does not include handle/display (65mm / 2.6 in.) and distance spacer at rear (80mm / 3.1 in.); height includes the feet (35mm / 1.4 in.) NOTE: All figures in tables are typical average values for series devices, based on factory standard following norm Din12880. Please contact us for certification information or IQ/OQ documents.

Heratherm Advanced Protocol Incubators

Exceptional temperature performance for demanding applications

Advanced digital timer

- Turn unit on or off at specified time – can be used to interrupt cell growth at specified time: Choose from real time or hour settings
- Unit is switched on and off at specified time – no need to waste energy when unit is not in use!

Design innovation for superior results

- Dual convection for versatility of application: fan speed adjustable from 0 to 100%
- Advanced digital timer for daily or weekly on/off cycles
- Stainless steel interior (1.4301) is easy to clean and corrosion resistant

Advanced temperature performance

- Broad temperatures range from 5 °C above ambient to 105 °C – even suitable for drying application
- Temperature uniformity as good as ± 0.2 °C
- Temperature stability at ± 0.1 °C



Heratherm Advanced Protocol Microbiological Incubator with unique dual convection, 180 L model pictured

Specifications table/order numbers Advanced Protocol Incubators

Order numbers (coated exterior / stainless steel exterior)	51028133 / 51028717	51028134 / 51028718	51028135 / 51028719
Model (coated exterior / stainless steel exterior)	IMH60 / IMH60 SS	IMH100 / IMH100 SS	IMH180 / IMH180 SS
Convection technology	Dual convection	Dual convection	Dual convection
Temperature range (°C)	Ambient +5 °C to 105 °C	Ambient +5 °C to 105 °C	Ambient +5 °C to 105 °C
Spatial temperature deviation at 37°C	± 0.6 / ± 0.2 °C	± 0.6 / ± 0.3 °C	± 0.6 / ± 0.4 °C
Temperature deviation over time at 150 °C	± 0.1 °C	± 0.1 °C	± 0.1 °C
Footprint (m² / sqft)	0.3 / 3.2	0.36 / 3.9	0.47 / 5.1
Chamber volume (L / cuft)	66 / 2.3	104 / 3.67	178 / 6.3
Interior Dimensions (mm / in (W x H x D))	354 x 508 x 368 / 13.9 x 20.0 x 14.5	464 x 608 x 368 / 18.3 x 23.9 x 14.5	464 x 708 x 543 / 18.3 x 27.9 x 21.4
Exterior Dimensions (mm / in (W x H x D))	530 x 755 x 565 / 20.9 x 29.7 x 22.2	640 x 855 x 565 / 25.2 x 33.7 x 22.2	640 x 955 x 738 / 25.2 x 37.6 x 29.1
Number of shelves (standard / max)	2 / 13	2 / 16	2 / 19
Max. shelf load (kg / lb)	25 / 55	25 / 55	25 / 55
Rated voltage / frequency (V / Hz)	230 / 50/60	230 / 50/60	230 / 50/60
Rated power / max. current (W / A)	850 / 3.7	1100 / 4.8	1300 / 5.7
Weight (kg / lb)	45 / 99	56 / 123	70 / 154
Energy consumption at 37 °C (W)	23 / 65	30 / 68	36 / 78

¹Values refer to: fan off / fan full speed. ²Depth does not include handle/display (65mm / 2.6 in.) and distance spacer at rear (80mm / 3.1 in.); height includes the feet (35mm / 1.4 in.) NOTE: All figures in tables are typical average values for series devices, based on factory standard following norm Din12880. Please contact us for certification information or IQ/OQ documents.

Heratherm Advanced Protocol Security Incubators

Incorporates additional safety features for ultimate sample protection



Heratherm Advanced Protocol Security Microbiological Incubator with unique dual convection and additional alarm systems, 100 L unit pictured

140°C push button decontamination

Building on our established CO₂ incubator decontamination technology, introducing the first microbiological incubators with an independently certified 140 °C decontamination routine⁴.

Intelligent design for improved results

- Lockable incubator door for restricted access
- Audible alarm if the door is left open accidentally

Superior sample protection

- Automatic over and under temperature alarm



Lockable door

140°C decontamination

- At 140°C contaminating microorganisms are reduced to a minimum, comparable to sterilization, within a six hour cycle
- No need for separate autoclaving of interior fittings
- Certified by an accredited microbiological institute³

Specifications table/order numbers Advanced Protocol Security Incubators

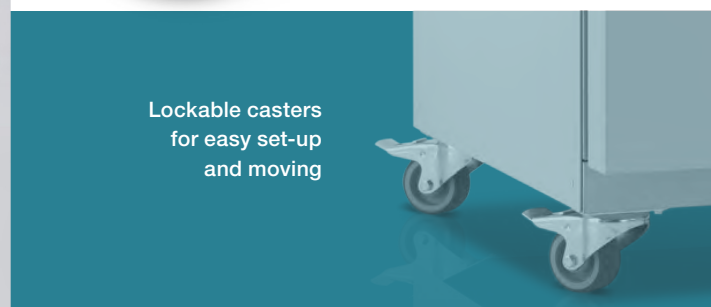
Order numbers (coated exterior / stainless steel exterior)	51028136 / 51028541	51028137 / 51028542	51028138 / 51028543
Model (coated exterior / stainless steel exterior)	IMH60-S / IMH60-S SS	IMH100-S / IMH100-S SS	IMH180-S / IMH180-S SS
Convection technology	Dual convection	Dual convection	Dual convection
Temperature range (°C)	Ambient +5 °C to 105 °C	Ambient +5 °C to 105 °C	Ambient +5 °C to 105 °C
Spatial temperature deviation at 37°C	± 0.6 / ± 0.2 °C	± 0.6 / ± 0.3 °C	± 0.6 / ± 0.4 °C
Temperature deviation over time at 150 °C	± 0.1 °C	± 0.1 °C	± 0.1 °C
Footprint (m2 / sqft)	0.3 / 3.2	0.36 / 3.9	0.47 / 5.1
Chamber volume (L / cuft)	66 / 2.3	104 / 3.67	178 / 6.3
Interior Dimensions (mm / in (W x H x D))	354 x 508 x 368 / 13.9 x 20.0 x 14.5	464 x 608 x 368 / 18.3 x 23.9 x 14.5	464 x 708 x 543 / 18.3 x 27.9 x 21.4
Exterior Dimensions ² (mm / in (W x H x D))	530 x 755 x 565 / 20.9 x 29.7 x 22.2	640 x 855 x 565 / 25.2 x 33.7 x 22.2	640 x 955 x 738 / 25.2 x 37.6 x 29.1
Number of shelves (standard / max)	2 / 13	2 / 16	2 / 19
Max. shelf load (kg / lb)	25 / 55	25 / 55	25 / 55
Rated voltage / frequency (V / Hz)	230 / 50/60	230 / 50/60	230 / 50/60
Rated power / max. current (W / A)	1390 / 6.1	1390 / 6.1	1390 / 6.1
Weight (kg / lb)	45 / 99	56 / 123	70 / 154
Energy consumption at 37 °C (W)	23 / 65	30 / 68	36 / 78

¹Values refer to: fan off / fan full speed. ²Depth does not include handle/display (65mm / 2.6 in.) and distance spacer at rear (80mm / 3.1 in.); height includes the feet (35mm / 1.4 in.) ³Verified by independent testing facility (IBFE 9/2010). ⁴Height of stand including casters: 187 mm. NOTE: All figures in tables are typical average values for series devices, based on factory standard following norm Din12880. Please contact us for certification information or IQ/OQ documents.

Maximum convenience



Easy to view, vacuum fluorescence display with push-button simplicity



Lockable casters for easy set-up and moving

180° door opening allows convenient access to the interior for hassle free cleaning and easy loading of probes

Features

- Large, easy-to-view, vacuum fluorescent display with simple-to-use touch button operation controlled by an onboard microprocessor
- Doors can be opened to 180° angle for easy access and use
- Stainless steel inner chamber with rounded edges for easy cleaning
- Lockable casters for easy mobility and stability
- Standard access port can be used for independent data monitoring

Specifications table/order numbers Large capacity General Protocol Incubators

Order numbers	51029322	51029334
Model	IGS400	IGS750
Convection technology	Gravity convection	Gravity convection
Temperature range (°C)	Ambient +5 °C to 75 °C	Ambient +5 °C to 75 °C
Spatial temperature deviation at 37°C	± 0.5 °C	± 1.3 °C
Temperature deviation over time at 150 °C	± 0.4 °C	± 0.4 °C
Footprint (m2 / sqft)	0.56 / 6.0	0.91 / 9.8
Chamber volume (L / cuft)	405 / 14.3	747 / 26.4
Interior Dimensions (mm / in (W x H x D))	544 x 1307 x 569 / 21.4 x 51.5 x 22.4	1004 x 1307 x 569 / 39.5 x 51.5 x 22.4
Exterior Dimensions (mm / in (W x H x D))	778 x 1653 x 770 / 30.6 x 66 x 30.3	1261 x 1653 x 770 / 49.6 x 66 x 30.3
Number of shelves (standard / max)	2 / 39	2 / 39
Max. shelf load (kg / lb)	30 / 66	30 / 66
Rated voltage / frequency (V / Hz)	230 / 50/60	230 / 50/60
Rated power / max. current (W / A)	1150 / 5.0	1500 / 6.5
Weight (kg / lb)	145 / 320	201 / 443
Energy consumption at 37 °C (W)	55	80

¹Depth does not include handle/display (65mm / 2.6 in.) and distance spacer at rear (106mm / 4.2 in.); height includes the casters (108mm / 4.3 in.) NOTE: All figures in all tables are typical average values for series devices, based on factory standard following norm Din12880. Please contact us for certification information or IQ/OQ documents.

Additional features



Best temperature performance and unique certified decontamination cycle

Enhanced efficiency

- Sophisticated timer extends the automation options available to user
 - Choose between a simple on/off timer, recurring weekly timer or set incubator activity based on the 24-hour clock
- Inner chamber made from stainless steel (highly resistant quality 1.4301)



Specifications table/order numbers Large Capacity Advanced Protocol Security Incubators

Order numbers (coated exterior / stainless steel exterior)	51029325 / 51029326	51029337 / 51029338
Model (coated exterior / stainless steel exterior)	IMH400-S / IMH400-S SS	IMH750-S / IMH750-S SS
Convection technology	Mechanical convection	Mechanical convection
Temperature range (°C)	Ambient +5 °C to 105 °C	Ambient +5 °C to 105 °C
Spatial temperature deviation at 37°C	± 0.2 °C	± 0.3 °C
Temperature deviation over time at 150 °C	± 0.2 °C	± 0.2 °C
Footprint (m² / sqft)	0.56 / 6.0	0.91 / 9.8
Chamber volume (L / cuft)	381 / 13.5	702 / 24.8
Interior Dimensions (mm / in (W x H x D))	544 x 1335 x 524 / 21.4 x 52.6 x 20.6	1004 x 1335 x 524 / 39.5 x 52.6 x 20.6
Exterior Dimensions (mm / in (W x H x D))	778 x 1653 x 770 / 30.6 x 66 x 30.3	1261 x 1653 x 770 / 49.6 x 66 x 30.3
Number of shelves (standard / max)	2 / 39	2 / 39
Max. shelf load (kg / lb)	30 / 66	30 / 66
Rated voltage / frequency (V / Hz)	230 / 50/60	230 / 50/60
Rated power / max. current (W / A)	1380 / 6.0	1610 / 7.0
Weight (kg / lb)	144 / 318	205 / 452
Energy consumption at 37 °C (W)	87	149

¹Depth does not include handle/display (65mm / 2.6 in.) and distance spacer at rear (106mm / 4.2 in.); height includes the casters (108mm / 4.3 in.) NOTE: All figures in all tables are typical average values for series devices, based on factory standard following norm Din12880. Please contact us for certification information or IQ/OQ documents.

Accessories

Specifications table/order numbers

Product	Description	Cat. No.
Perforated shelves		
Perforated shelf Compact	Stainless steel perforated shelf for Compact incubator; 180 x 290 mm	50125605
Perforated shelf General Protocol 60 L	Stainless steel perforated shelf for General Protocol 60 L; including 2 shelf supports; 329 x 376 mm	50127770
Perforated shelf General Protocol 100 L	Stainless steel perforated shelf for General Protocol 100 L; including 2 shelf supports; 439 x 376 mm	50127771
Perforated shelf General Protocol 180 L	Stainless steel perforated shelf for General Protocol 180 L; including 2 shelf supports; 439 x 551 mm	50127772
Perforated shelf Advanced Protocol / Security 60 L	Stainless steel perforated shelf for Advanced Protocol / Advanced Protocol Security; 60 L; incl. 2 shelf Advanced Protocol supports; 329 x 330 mm	50127773
Perforated shelf Advanced Protocol / Security 100 L	Stainless steel perforated shelf for Advanced Protocol / Advanced Protocol Security; 100 L; including 2 shelf Advanced Protocol / supports; 439 x 330 mm	50127774
Perforated shelf Advanced Protocol / Security 180 L	Stainless steel perforated shelf for Advanced Protocol / Advanced Protocol Security; 180 L; including 2 shelf Advanced Protocol / supports; 439 x 505 mm	50127777
Perforated shelf 400 L	Stainless steel perforated shelf for General Protocol / Advanced Protocol Security 400 L; incl. 2 shelf supports; 528 x 498 mm	50135241
Perforated shelf 750 L	Stainless steel perforated shelf for General Protocol / Advanced Protocol Security 750 L; incl. 2 shelf supports; 984 x 498 mm	50135242
Additional shelving		
Wire mesh shelf 60 L	Wire mesh shelf for Advanced Protocol / Advanced Protocol Security; 60 L; including 2 shelf supports; 338 x 336 mm	50127764
Wire mesh shelf 100 L	Wire mesh shelf for Advanced Protocol / Advanced Protocol Security; 100 L; including 2 shelf supports; 448 x 336 mm	50127765
Wire mesh shelf 180 L	Wire mesh shelf for Advanced Protocol / Advanced Protocol Security; 180 L; including 2 shelf supports; 448 x 511 mm	50127766
Wire mesh shelf 400 L, GP	Wire mesh shelf for General Protocol; 400 L; including 2 shelf supports; 528 x 535 mm	50135245
Wire mesh shelf 400 L, APS	Wire mesh shelf for Advanced Protocol Security; 400 L; including 2 shelf supports; 528 x 503 mm	50135243
Wire mesh shelf 750 L, GP	Wire mesh shelf for General Protocol; 750 L; including 2 shelf supports; 984 x 535 mm	50135246
Wire mesh shelf 750 L, APS	Wire mesh shelf for Advanced Protocol Security; 750 L; including 2 shelf supports; 984 x 503 mm	50135244

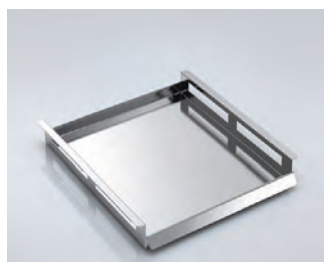


Stainless steel perforated shelves

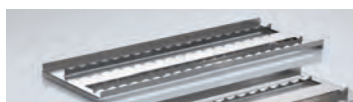
Accessories continued

Specifications table/order numbers

Product	Description	Cat. No.
Additional shelving continued		
Petri Dish holder (90 mm) 60 L	Shelf with holders for Petri dishes; ø 90 mm; stainless steel; for all 60 L incubators; incl. 2 shelf supports; 9 stacks; 77 mm (h)	50128816
Petri Dish holder (90 mm) 100 L	Shelf with holders for Petri dishes; ø 90 mm; stainless steel; for all 100 L incubators; incl. 2 shelf supports; 12 stacks; 77 mm (h)	50128817
Petri Dish holder (90 mm) 180 L	Shelf with holders for Petri dishes; ø 90 mm; stainless steel; for all 180 L incubators; incl. 2 shelf supports; 16 stacks; 77 mm (h)	50128819
Petri Dish holder (50 mm) 60 L	Shelf with holders for Petri dishes; ø 50 mm; stainless steel; for all 60 L incubators; incl. 2 shelf supports; 20 stacks; 77 mm (h)	50128793
Petri Dish holder (50 mm) 100 L	Shelf with holders for Petri dishes; ø 50 mm; stainless steel; for all 100 L incubators; incl. 2 shelf supports; 24 stacks; 77 mm (h)	50128794
Petri Dish holder (50 mm) 180 L	Shelf with holders for Petri dishes; ø 50 mm; stainless steel; for all 180 L incubators; incl. 2 shelf supports; 36 stacks; 77 mm (h)	50128815
Drip Tray 60 L	Stainless steel drip tray for all 60 L incubators; includes 2 shelf supports; 295 x 325 x 20 mm drip space	50128683
Drip Tray 100 L	Stainless steel drip tray for all 100 L incubators; includes 2 shelf supports; 405 x 325 x 20 mm drip space	50128791
Drip Tray 180 L	Stainless steel drip tray for all 180 L incubators; includes 2 shelf supports; 405 x 500 x 20 mm drip space	50128792
Lowenstein kit	Lowenstein kit 150 mm tubes; 2 trays to place on top of perforated shelf (shelf not supplied); 435 x 155 mm; 20 tubes each tray – usable for 100 L models and larger	50128265
Silicone free viton door sealing		
Silicone free viton sealing 60 L	Silicone free viton door sealing for all 60 L Heratherm incubators	50130657
Silicone free viton sealing 100 L	Silicone free viton door sealing for all 100 L Heratherm incubators	50130658
Silicone free viton sealing 180 L	Silicone free viton door sealing for all 180 L Heratherm incubators	50130659
Silicone free viton door sealing, 400L & 750L	Factory installed silicone free viton door sealing. Please order with 400L or 750L incubator. Note: The sealing cannot be installed in the field on these free standing 400L and 750 L units.	51901344



Drip tray



Lowenstein shelves



Silicone free viton door sealing



Petri dish holder

Accessories continued

Specifications table/order numbers

Product	Description	Cat. No.
Sample Sensor		
Sample sensor	Sample sensor for connection to all Advanced Protocol Security incubators: measures exact sample temperature; sample temperature is shown on display as plugged in; cable length: 2200 mm	50127768
Support replace stands		
Support stand 60 L	Support stand with casters for Heratherm 60 L Models; height including casters 187 mm	50127741
Support stand 100 L	Support stand with casters for Heratherm 100 L Models; height including casters 187 mm	50127742
Support stand 180 L	Support stand with casters for Heratherm 180 L Models; height including casters 187 mm	50127743
Stacking kits: recommended if decon cycle is performed in lower unit		
Stacking kit 60 L	For Heratherm 60 L / 2 cu.ft. Models – recommended if decontamination cycle is performed in lower unit	50126665
Stacking kit 100 L	For Heratherm 100 L / 3.5 cu.ft. models – recommended if decontamination cycle is performed in lower unit; to stack two 100 L models or 60 L on 100 L	50126666
Stacking kit 180 L	For Heratherm 180 L / 6.4 cu.ft. models – recommended if decontamination cycle is performed in lower unit; to stack two 180 L models or 60 L / 100 L on 180 L	50126667
Fresh air particle filter		
Fresh air particle filter	Fresh air particle filter for connection to port; for all Advanced Protocol and Advanced Protocol Security incubators	50127567
Documentation		
IQ/OQ documentation	Documents for installation, operation and performance qualification of microbiological incubators.	IOQDOCE89003499



Stacking kit



Support stand with casters



Fresh air particle filter

Factory installed options

Specifications table/order numbers

Product	Description	Cat. No.
Access port left, small	Additional access port, left side, center; Ø 24 mm for all incubators. Please order in conjunction with desired incubator	51900996
Access port left, large	Additional access port, left side, center; Ø 58 mm for all incubators. Please order in conjunction with desired incubator	51900997
Access port right, small	Additional access port, right side, center; Ø 24 mm for all incubators. Please order in conjunction with desired incubator	51900998
Access port right, large	Additional access port, right side, center; Ø 58 mm for all incubators. Please order in conjunction with desired incubator	51900999
Access port top, small	Additional access port, top, center; Ø 24 mm for all incubators. Please order in conjunction with desired incubator	51901000
Access port top, large	Additional access port on center of top of unit; Ø 2.28 in for all incubators	51901001
Door hinge left side	Door hinge on left side – Available for General Protocol; Advanced Protocol and Advanced Protocol Security units. Table top, coated exterior only. Please order in conjunction with desired incubator	51900993
Door hinge left side - 400L	Door hinge on left side – Available for General Protocol and Advanced Protocol Security units. 400L floor stand, coated exterior only. Please order in conjunction with desired incubator	51901213



Additional access port top



Additional access port right